

# Wainwright Elementary



## ✦ Principal's Message

We hope you all had a nice break over the holidays and now that winter has definitely arrived, here at WES, we are more than ready, as January brings one of our highlights, our annual Winter Active Day, which is scheduled for Friday January 26th, weather depending. The focus of this event is always learning how to lead a healthy active lifestyle no matter what the weather is. Parents are welcome to come check things out, or help if your schedule permits.

## January Events

### January 19

- Tues/Thurs Kindergarten has school today
- Jump Rope for Heart Rally

### January 25

- Telus World of Science is at WES

### January 26

- Winter Active Day
- WEPA Toy Bingo - 6:00 PM in the Gym

### January 31, February 1 & 2

- No School for Students



## Cold Weather Reminders

Since the beginning of December, we have seen students being dropped off at the school really early. With the extremely cold weather we're experiencing, we want to remind you that students should not be arriving to school before 8:35 am, when the adults in the building are watching out for them and making sure they are safe and warm.

Don't forget to do a quick check in the morning to ensure your child has all their winter gear on or at least have it in their backpack. Even a short walk from the bus to the school can be awful if you aren't dressed appropriately.



## Changes in Information

If you have moved, changed your phone number, cancelled your landline, etc., since October, please contact the school to update your contact information.

We've called a few people who don't have kids in our school based on the information we had. All of them have been really great about the wrong number, but they're not who we need when a student becomes ill.

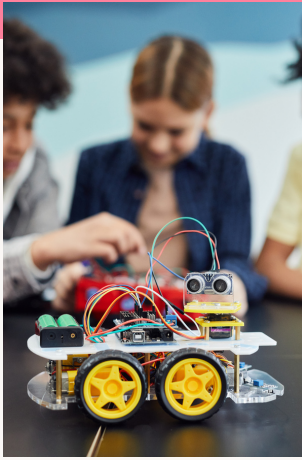


## February Hot Lunch

ORDER BY JANUARY 22

Families interested can order online at <https://wepa.hotlunches.net>.

The school code is WESHL.



## Telus World of Science

JANUARY 25

Telus World of Science-Science in Motion is coming to do presentations and run various programs with our students. They aim to provide high quality science experiences for students in rural areas. We can't wait to see what the day brings!

## Winter Active Day

JANUARY 26

Fortunately, the snow arrived just in time for one of our favourite events, and based on weather predictions it looks like it might be a fairly nice winter day for us.

**Volunteers Needed:** If you are brave enough to join us outside for 30 to 45 minutes, we are always looking for volunteers. Contact your child's teacher if you can help as a group leader.

**Winter Gear:** Being dressed in appropriate winter gear is the only way to truly enjoy this event. Make sure you bring everything you'll need with you to school.

If you can't volunteer, but want to stop in and watch for a couple minutes, the schedule for the day is:

- 9:45 AM to 10:30 AM - Grades 3 and 4
- 11:00 AM to 11:45 AM - Grades 1 and 2
- 1:00 PM to 2:00 PM - Grades 5 and 6

Classes will enjoy a healthy snack provided by WEPA after their event.



## Jump Rope for Heart

Looking ahead, on February 14th we will be holding our 35th Jump Rope for Heart. Information was emailed to our parents with students in grades 4, 5, and 6. In our previous years of jumping we have raised \$441,930. This year our goal is to reach \$10,000. Information was sent home to parents in grades 4 to 6, and more will be sent home in February.

WEPA Presents

# TOY BINGO NIGHT

**\$2 for each 9-game card**

**FRIENDS FUN PRIZES**

**DOORS OPEN AT 6:00pm, STARTS AT 6:30pm**

**\*\* ALL CHILDREN MUST BE  
ACCOMPANIED BY AN ADULT. \*\***

**26  
JAN**

**WAIN ELEM SCHOOL GYM**

**50/50 tickets, drinks and snacks  
will be available for purchase.**

**We are looking for volunteers! If you'd  
like to help the night of the event,  
please let the school office know.**



## Afterschool Basketball

TUESDAYS,  
3:30 PM TO 5:00 PM

Afterschool basketball for grades 4 to 6 started on January 9. The last day will be February 13. Please make sure your child has a ride for 5:00 pm.



## Accelerated Reading

FEBRUARY 3

The last day to reach your reading goals is February 3rd. It's not too late, keep reading. We'd love to have all the students in these grades meet their goal and join us for the reward day being planned. More details coming soon!



## School Council Meeting

JANUARY 29 - 7:00 PM

As many of you know, the School Council is looking into the possibility of switching school photographers for the upcoming school year. They have invited Smart Photography out of Edmonton to join them January 29 to discuss what they can offer our families should we change providers. Lifetouch will be at the February 26 meeting. These meetings are open to all our parents. If you would like to find out more, please join us.

On another note, we did hear from some parents that they weren't happy with the picture quality this year. If you are one of those parents, we ask that you reach out to Lifetouch to discuss your concerns with them at 1-866-457-8212. Their representative has told us they guarantee 100% satisfaction.



**Wainwright**  
ELEMENTARY SCHOOL

# **NOW ACCEPTING KINDERGARTEN REGISTRATIONS**

---

## **2024/2025**

**For more information or  
to register contact us at:**

**Phone: (780) 842-3361**

**Email: [wes@btps.ca](mailto:wes@btps.ca)**

**Website: <https://wes.btps.ca>**



As per Alberta Education, children must turn 5 years on or before December 31, 2024, to attend Kindergarten in September 2024.

**Wainwright  
PreKindergarten is  
Now Accepting  
Children for the  
2024/2025  
4 Years Old Program**



For more information or to sign  
up contact Barb Berg at (780) 842-9572  
or email [louise61@telus.net](mailto:louise61@telus.net).

**LITTLE LEADERS  
PRESCHOOL  
FOR 3 YEAR OLDS**



**Now Accepting  
Children for the  
September 2024  
3 Year Olds Program**

For more information  
contact Emily McNary at  
(780)806-6068 or email  
[emmcnary@gmail.com](mailto:emmcnary@gmail.com)

**Wainwright Elementary School**

905 10 Street

Wainwright, AB T9W 2R6

Phone: (780) 842-3361 Email: [wes@btps.ca](mailto:wes@btps.ca)

